

João de Deus Castro Lobo

Cui Comparabo Te

Partes:

Flauta 1 - Flauta 2
Trompa 1 - Trompa 2
Violinos 1
Violinos 2
Viola
Violoncelos - Contrabaixos

Pesquisa e Edição
Márcio Miranda Pontes

Creative Commons Attribution-NonCommercial 4.0 International (CC BY-NC 4.0)
Editora Pontes/MG
Belo Horizonte
2018

Patrocínio



Patrocínio viabilizado pelo incentivo de pessoas físicas

Realização



MINISTÉRIO DA
CULTURA



Cui Comparabo Te

João de Deus Castro Lobo
(1794 - 1832)

Largo [$\text{♩} = 60$]

Solo
p

8
cresc. *f* *p*

20 **Solo** *p*

28 **Solo** *p*

34 *p*

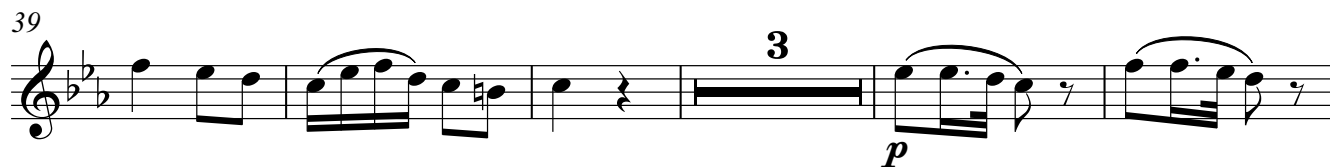
40 *p*

48 **Solo** *p*

Cui Comparabo Te

Flauta II

João de Deus Castro Lobo
(1794 - 1832)



Trompa I
em F

Cui Comparabo Te

João de Deus Castro Lobo
(1794 - 1832)

Largo [$\text{♩} = 60$]

9

28

40

p *f* *p* *p*

cresc.

2 4 9 4 8

Trompa II
em F

Cui Comparabo Te

João de Deus Castro Lobo
(1794 - 1832)

Largo [$\text{♩} = 60$]

9

28

40

p *f* *p* *p*

cresc.

2

4

9

3

4

8

Cui Comparabo Te

João de Deus Castro Lobo
(1794 - 1832)

Largo [$\text{♩} = 60$]

3

p *p* *cresc.*

9

f *f*

19

p *pp* *p*

28

p

36

p *p*

46

p *p*

Violino I

Cui Comparabo Te

João de Deus Castro Lobo
(1794 - 1832)

Largo [$\text{♩} = 60$]

7

12

18

24

31

34

38

42

44

47

p *f* *cresc.* *f* *p* *p* *p* *p* *p* *p*

3 2

Violino II

Cui Comparabo Te

João de Deus Castro Lobo
(1794 - 1832)

Largo [$\text{♩} = 60$]

3

5

10

16

21

27

32

35

39

45

48

Viola

Cui Comparabo Te

João de Deus Castro Lobo
(1794 - 1832)

Largo [$\text{♩} = 60$]

3

2

Measures 1-8. Treble clef, key signature of two flats, 2/4 time signature. Dynamics: *p*, *p*, *cresc.*

Measures 9-15. Treble clef, key signature of two flats, 2/4 time signature. Dynamics: *f*, *f*, *f*.

Measures 16-20. Treble clef, key signature of two flats, 2/4 time signature. Dynamics: *p*.

Measures 21-25. Treble clef, key signature of two flats, 2/4 time signature. Dynamics: *p*.

Measures 26-32. Treble clef, key signature of two flats, 2/4 time signature. Dynamics: *p*.

Measures 33-39. Treble clef, key signature of two flats, 2/4 time signature. Dynamics: *p*.

Measures 40-45. Treble clef, key signature of two flats, 2/4 time signature. Dynamics: *p*, *p*.

Measures 46-52. Treble clef, key signature of two flats, 2/4 time signature. Dynamics: *p*, *p*.

Violoncelo
Contrabaixo

Cui Comparabo Te

João de Deus Castro Lobo
(1794 - 1832)

Largo [$\text{♩}=60$]

3

Measures 1-6 of the piece. The music is in bass clef, 2/4 time, and B-flat major. It begins with a piano (*p*) dynamic and features a triplet of eighth notes in the third measure. A fermata is placed over the eighth note in the sixth measure.

7

Measures 7-13. The music continues with a crescendo (*cresc.*) leading to a forte (*f*) dynamic in measure 11. A fermata is placed over the eighth note in measure 13.

14

Measures 14-20. The music starts with a forte (*f*) dynamic and a fermata over the eighth note in measure 14. It then moves to a piano (*p*) dynamic in measure 18. A fermata is placed over the eighth note in measure 20.

21

Measures 21-25. This section features a continuous sixteenth-note pattern in the bass line, starting with a piano (*p*) dynamic.

26

Measures 26-32. The music begins with a piano (*p*) dynamic and a fermata over the eighth note in measure 27. It features a mix of eighth and sixteenth notes.

33

Measures 33-38. The music starts with a piano (*p*) dynamic and includes a sixteenth-note pattern in measure 35.

39

Measures 39-45. The music begins with a piano (*p*) dynamic and features a sixteenth-note pattern in measure 45.

46

Measures 46-52. The music starts with a piano (*p*) dynamic and includes a sixteenth-note pattern in measure 49. The piece concludes with a final rest in measure 52.