

Compositor não identificado

# Trezena de Santo Antônio

Partes:

Trompa 1 - Trompa 2  
Violinos 1  
Violinos 2  
Violoncelos

Pesquisa e Edição  
Márcio Miranda Pontes

Creative Commons Attribution-NonCommercial 4.0 International (CC BY-NC 4.0)  
Editora Pontes/MG  
Belo Horizonte  
2018

Patrocínio



Patrocínio viabilizado pelo incentivo de pessoas físicas

Realização



MINISTÉRIO DA  
CULTURA





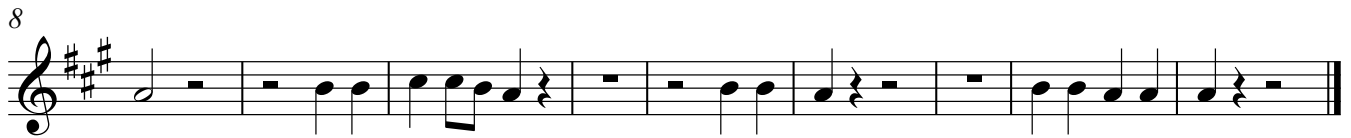
# Trezena de Santo Antônio

Horn 1 in F

Invitatório

compositor não identificado

**Andante**



**Hino**

**Andante**

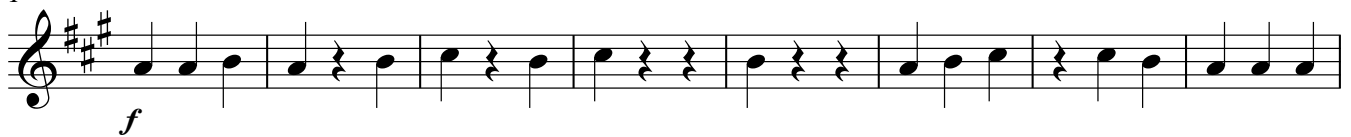


**Allegro**



**Responsório**

**Andante**



18



25

**Presto**

13



## Verso

**Andante**

26



8



16



24

**Presto**

12



21

**Largo**

**Presto**





# Trezena de Santo Antônio

Horn 2 in F

Invitatório

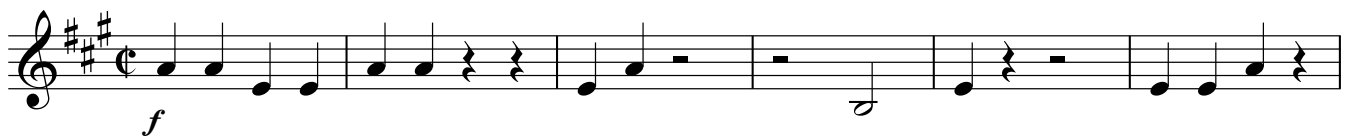
compositor não identificado

**Andante**



**Hino**

**Andante**

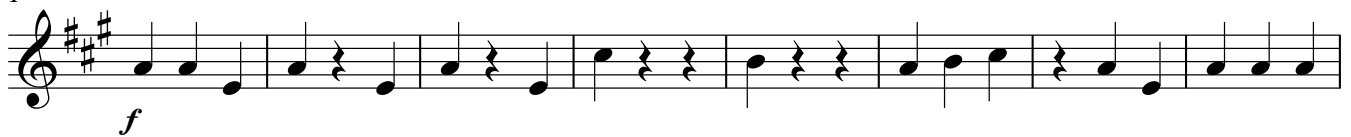


**Allegro**

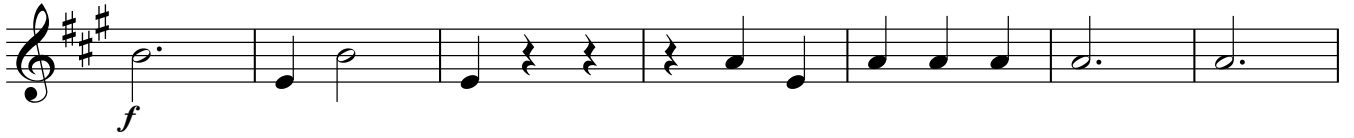


**Responsório**

**Andante**



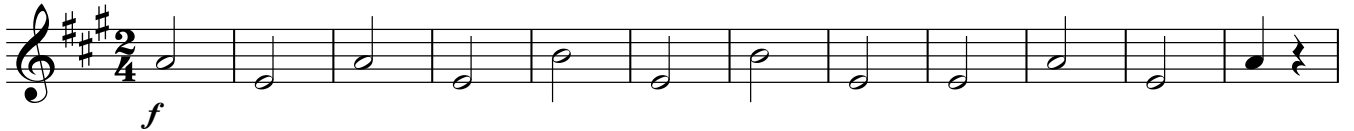
18



25



**Presto**



13



26

**Andante**



8



16



24

**Presto**



12



21

**Largo**

**TACET**









# Trezena de Santo Antônio

Violin 1

Invitatório

compositor não identificado

**Andante**

*f*

4

7

11

14

*f*

*fino*

**Andante**

*f*

5

*p*

9

12

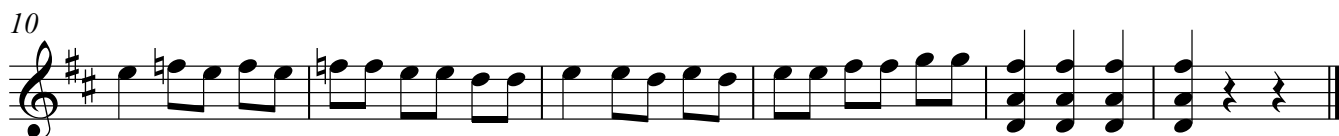
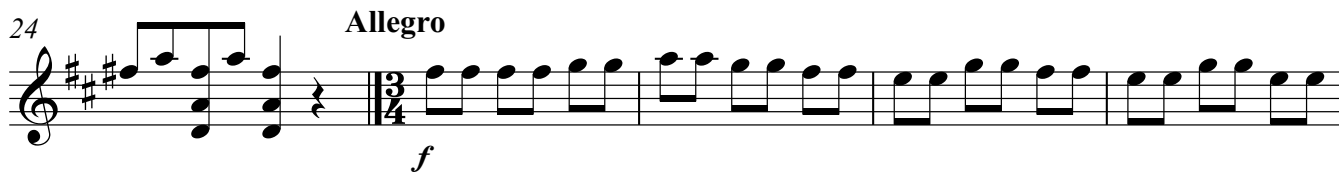
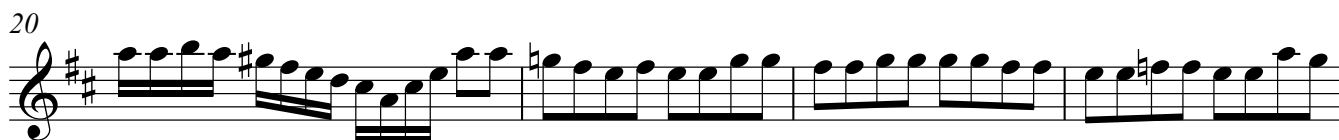
*f*

16

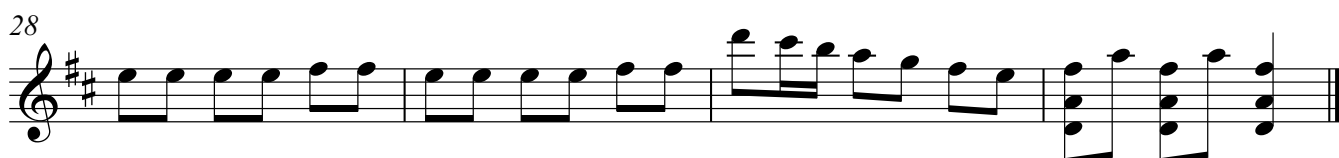
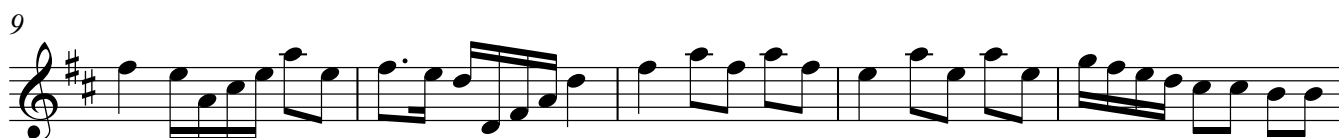
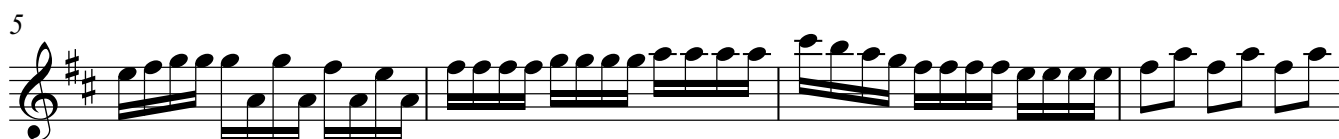
*p*

*f*

V.S.



**Responsório**



**Presto**

*f*

6

12

19

**Andante solo**

*p*

6

12

18

21

## Presto

*f*

6

12

19

## Largo

TACET

## Presto

*f*

4

10

16

21

# Trezena de Santo Antônio

Violin 2

Invitatório

compositor não identificado

**Andante**

*f*

4

7

11

14

**Andante**

*f*

5

*p*

9

12

*f*

16

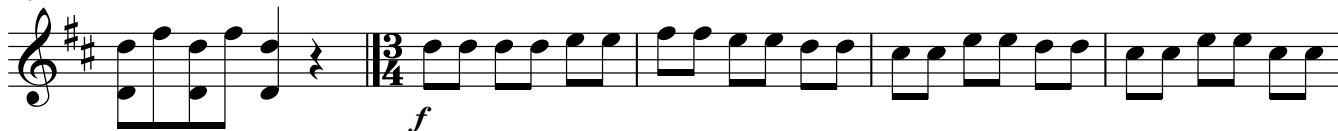
*p* *f*

V.S.

20



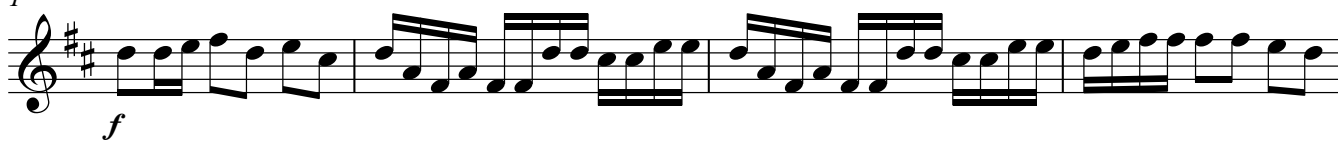
24

**Allegro**

5



10

**Responsório**1 **Andante**

5



10



15



21



27





**Presto**

*f*

7

13

19

**Andante**  
solo

*p*

6

12

18

21

## Presto

Measures 4-6: Treble clef, key signature of two sharps (F# and C#), 2/4 time signature. The music consists of sixteenth-note runs. A dynamic marking of *f* is placed below the first measure.

Measures 7-12: Treble clef, key signature of two sharps (F# and C#), 2/4 time signature. The music consists of sixteenth-note runs. Measure 12 ends with a fermata.

Measures 13-18: Treble clef, key signature of two sharps (F# and C#), 2/4 time signature. The music consists of sixteenth-note runs. Measure 18 ends with a fermata.

Measures 19-24: Treble clef, key signature of two sharps (F# and C#), 2/4 time signature. The music consists of sixteenth-note runs. Measure 24 ends with a fermata.

## Largo

## TACET

## Presto

Measures 25-27: Treble clef, key signature of two sharps (F# and C#), 2/4 time signature. Measure 25 is a whole rest. A dynamic marking of *f* is placed below the first measure of the second system.

Measures 28-33: Treble clef, key signature of two sharps (F# and C#), 2/4 time signature. The music consists of sixteenth-note runs. Measure 33 ends with a fermata.

Measures 34-40: Treble clef, key signature of two sharps (F# and C#), 2/4 time signature. The music consists of sixteenth-note runs. Measure 40 ends with a fermata.

Measures 41-46: Treble clef, key signature of two sharps (F# and C#), 2/4 time signature. The music consists of sixteenth-note runs. Measure 46 ends with a fermata.

Measures 47-52: Treble clef, key signature of two sharps (F# and C#), 2/4 time signature. The music consists of sixteenth-note runs. Measure 52 ends with a fermata.



8



## Responsório

1 Andante



7



14



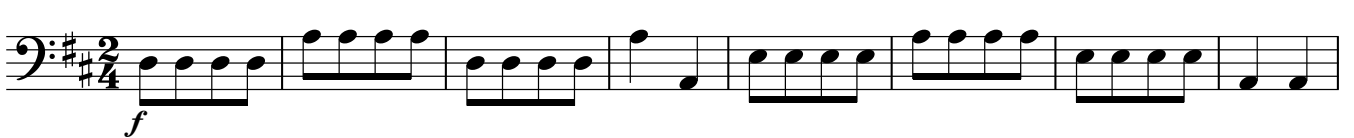
20



26



## Presto



9



17



**Andante**  
solo

8



15



22



**Presto**

6



14



22



**Largo**

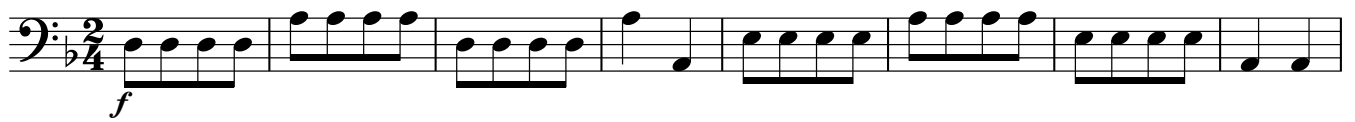
5



11



## Presto



9



16



21

